

# Delivering Growth using Innovation & Technology



**PISOFT INFORMATICS PVT. LTD.**

**COMPANY PROFILE**



## An Introduction

We, Pisoft Informatics Pvt. Ltd, are a rapidly growing Mohali (Punjab) based IT company, providing ERP Solutions, Software Development, Website Development, Design & Implementation, Web Services, Domain Registration, Hosting, Networking, AMC's, Online/Offline Technical Support and Training (Software Development & implementation and Networking)

### SERVICES

#### Software Development



We provide customized solutions for development of Desktop, Web and Mobile applications which are scalable as per the needs of our clients ranging for a start-up company or an established business

#### ERP Services



We offer low cost ERP solutions in different industry segment thus making their job easy and highly managed by use of information technology to match productivity of their organization in order

#### Web Services



We design, develop, maintain enterprise-level applications from grass root level that enhance the bottom line of business productivity thus gives a new business opportunities and enhancement.

#### Domain Registration & Web Hosting



Clients search and register a domain and host the application at a very flexible space & bandwidth based plans. All this available with few clicks with round the clock technical assistance.

#### Career & Internship



Our interns learn the best of the industrial knowledge and have hands on experience over projects to gain practical exposure. We support them to choose and build their career with strong

#### Technical Support / AMC



Services include hardware and networking solutions for small and enterprise level organization. We remotely maintain all types of web servers across the globe and provide online /

Our efficient, young and competitive professionals experienced team is a greatest resource with latest infrastructure, providing dedicated and high end solutions to our clients. Our products and services are user friendly and built with a proactive approach to our client's needs with strong follow up and interaction with them during their project construction using a complete software development life cycle and dividing a channelized system with different phases like requirement gathering, analysis, designing, development, testing live, deployment and maintenance.

We serve Individuals, Educational Institutes, E-Commerce/Online Marts, Finance Sector, Medical /Health Sector, Traders, SPA's, HR & Accounting Service Providers, Tours & Travel industry and many other business establishments. Our most valuable asset is client satisfaction by timely delivering user friendly applications with maximum performance and accuracy.

Our main focus is on our ERP software solutions which is a Web Based Application under the brand name of PisoftERP. We offer it on Software-as-a-Service (SaaS) model, i.e., instead of purchasing the software, our clients have to pay a subscription to access the software and their data over the internet. Because the program is running on a remote server, clients are free to access it from anywhere, only they should have an access to internet connection.

#### What is ERP?

Enterprise Resource Planning (ERP) is business process management software that allows an organization to use integrated systems and software packages used by organizations to manage day-to-day business activities. It automates many back office functions related to technology, services and human resources. ERP software typically integrates all departments of an organization. For example, in case of manufacturing industry generally it includes Product Planning, Development, Manufacturing, Sales and Marketing, Supply Chain Management, CRM, HR Management, Finance and Accounts etc. in a single database, application and user interface.

ERP is the most top of the line software that has advanced the universe of business applications. ERP applications streamline and incorporate operations, procedures and data streams in an endeavour, to synergise the assets of an association. At the end of the day, ERP frameworks incorporate all information and procedures of an organisation into a single place for information sharing. A key element of most ERP frameworks is the

utilization of a brought together database to store information for the different modules or departments.

Most associations over the world have understood that in a quick changing business environment, it is difficult to make and keep up a specially crafted programming bundle which will oblige every one of their necessities furthermore be state-of-the-art. Understanding these prerequisites of associations, organizations have composed and created ERP programming, which offer a coordinated programming, answer for all the practical procedures in an association

ERP: An Enterprise Application

ERP software is considered to be a type of enterprise application, that is software designed to be used by larger businesses and often requires dedicated teams to customize and analyze the data and to handle upgrades and deployment. In contrast, Small business ERP applications are lightweight business management software solutions, often customized for a specific business industry or vertical.

### Application Service Providers (ASP)

Today, using Enterprise Application Service Providers (ASP) is more prevalent. Here, the Enterprise Application is designed by a third-party application service provider and leased to the enterprise, as an on-premise or hosted service. This is also often referred to Software-as-a-Service (SaaS) or Web-based applications.

### What is PisoftERP?

PisoftERP is a web-based management automation Enterprise Application that assure smooth administration and management of all the activities with greater flexibility and ensures better interaction between all stakeholders and with an ease to make effective managerial decisions by reducing the gap between information and the users to maintain faster communications. Designed for better interaction between stakeholders by handling information gracefully and does not required much efforts to understand usage even by a non-technical user and reducing paper work.

Hosted on Cloud Servers and can be used without dependencies on any extra hardware or technical maintenance staff. All that is required is a device - Computer / Tablet / Mobile Phone with an internet connection to access the system.

Today most organizations implement ERP systems to replace legacy software or to incorporate ERP applications because no system currently exists. In fact, a 2016 study by Panorama Consulting Solutions, LLC., indicates that organizations implement ERP for the following reasons:

- To replace out-of-date ERP software (49%)
- To replace home-grown systems (16%)
- To replace accounting software (15%)
- To replace other non-ERP systems (20%)



## Industries We Cater

### FINANCE

#### *Financial Services Management ERP (FSME)*

- ✓ Credit Cooperative Societies
- ✓ Financers/Money Lenders

### EDUCATION

#### *Education System Management ERP (ESME)*

- ✓ Schools
- ✓ Tuition Centres
- ✓ Play Way Schools
- ✓ Coaching Centres

### TOURS AND TRAVEL

#### *Tours & Travel System Management ERP (TTSME)*

- ✓ Billing Management
- ✓ Travel Agents
- ✓ Tour Planners
- ✓ Booking Agents

### AUTOMOBILE INDUSTRY

#### *Automotive System Management ERP (ASME)*

- ✓ Fleet Management
- ✓ Service Station Management

### MEDICAL AND HEALTHCARE

#### *Medical & Healthcare System Management ERP (MHSME)*

- ✓ Clinics
- ✓ Hospitals (OPD)

### SERVICE INDUSTRY

#### *Service Provider's System Management ERP (SPSME)*

- ✓ Accounts & Finance Management
- ✓ Billing Management

A system centralized for all users to securely get information as per the granted access. PisoftERP also satisfies modern web security standards and has a user friendly interface that helps anyone having basic knowledge of computers to start its usage within ten minutes of their first login. Has an authentication and authorization mechanisms with an edge to reduce dependency by elimination of people-dependent processes and an approach to reduce use of paper.

## Why Use PisoftERP?

Administration & management of organizations in business has become a tedious and complex task. It requires careful planning, systematic approach and accurate control of administrative processes to attract the best business opportunity, produce best results, projects the best image, coupled with tight competition as per the need the business which requires exactness and precision for management of records. Majority of IT professionals recognize complexity as a major problem. Therefore, more than approx. 85% companies are implementing IT simplification software solutions and other technologies to Run Smoothly.

### Features of PisoftERP

#### *Iconic and Modern Design*

Intelligent user interface to ensure feel good factor to the end user. It also provides quick navigation with ease of access on just a click or tap making it user friendly to search information.

#### *User Roles*

The most important module helps to maintain privacy and control of information flow by authorizing different users their access level. Administrator can set privileges to employees as per their roles and they can access those modules, has a process of withdrawal of privileges too on just a few clicks with real-time updation so making the information secure.

## User Friendly Interface

The entire system is designed and developed in such a way that anyone with basic knowledge of computers and email can start using PISOFT ERP and become familiar within ten minutes of their first login by using any internet connected device.

## Authentication

Authenticated profile dependent access to data assigned by the administrator is supported to protect the information and only those users are provided information that matters to use like the student panel gives information only about self and not of others or only those teachers can mark attendances who are assigned to do so.

## Automatic Login Creation

As soon as the user is added an auto generated login id is created which is sent to their email id or mobile with a default password for first login.

## Optimized for Mobile Device

PISOFT ERP is optimized to use on any device even on slower internet connection having an ability of consuming very low data usage so even at slower internet speed the system can run easily with very little interruptions.

## Searching

Any information can be searched the way user needs it using search tools in all modules using large number of filters which are available.

## Privacy

Complete privacy and data security with strict authentication and authorization mechanisms. Common login for staff, student and parent with different customized dashboard are designed to provide the information linked to their profile and no other data is shared.

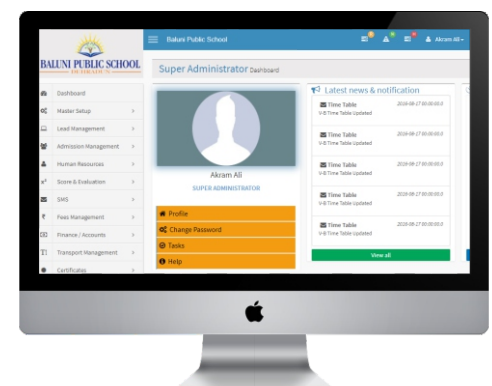
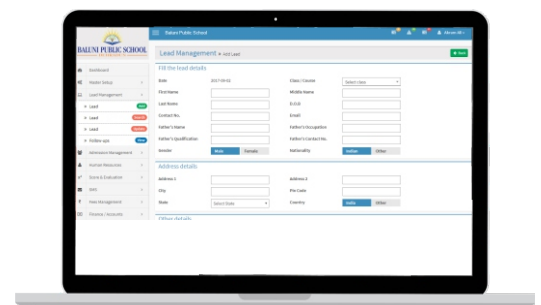
## Customization

The system can be customised for various needs as per the requirements of the organisation in order to sync with their existing system. All the required information fields are fixed as per requirement and the process flow can be managed to different customisations during implementation.

The entire system is set in such a way that the users are comfortable and can manage according to their existing daily work flow habits thus making it easier to adapt the system environment.

## Modules in PisoftERP

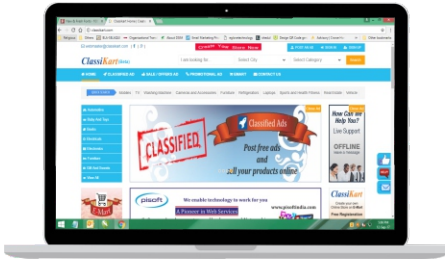
- ✓ Lead Management
- ✓ Student Management
- ✓ Student Score And Evaluation
- ✓ Transport Management
- ✓ Student Fee Management
- ✓ Hostel Management
- ✓ Finance / Accounting Management
- ✓ Human Resource Management
- ✓ Stocks And Inventory Management
- ✓ Appointment Management
- ✓ Customer Relationship Management
- ✓ Service And Package Management
- ✓ Billing And Collections
- ✓ Gifts And Incentive
- ✓ Members Management System
- ✓ Advisor Management System
- ✓ Fund Deposit Management
- ✓ Loan Management
- ✓ Patient Management System
- ✓ Clinic OPD Management
- ✓ Pathology Tests Management
- ✓ Vehicle Booking Management
- ✓ Tour Booking Management
- ✓ Vehicle Management
- ✓ Task Management
- ✓ News And Notification



# ClassiKart

# eLive TODAY

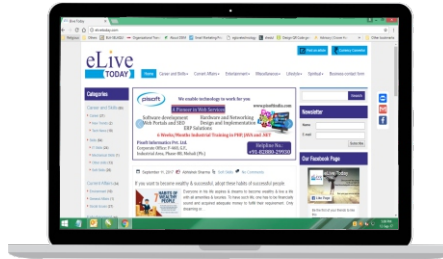
# CHANDIGARH WEB



[www.classikart.com](http://www.classikart.com)

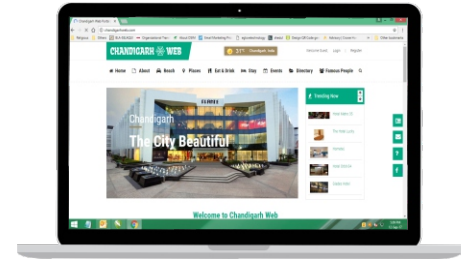
Classikart – A one stop for all, those who want to buy or sell new or used item, promote business service and creating an online store to sell products.

At ClassiKart, a wide variety of categories make it a best place to use classified services, Ad posting, business promotion and online sale mart. E-mart, an online sale mart for merchants, where a merchant can post, sale and deliver products directly to huge number of people who prefer to do online shopping. A user a ClassiKart gets multiple features available for different uses like posting a Classified Ad under different categories, posting a sale/promotion/offer ad under various categories and creating an online store to sell products.



[www.elivetoday.com](http://www.elivetoday.com)

Elive Today is an independent website for a visitor interested in a resource for information with different aspects for technological advancements, current trend in the world of Information Technology, Job skills, Student Placements, Latest Trends, Entertainment etc. We effort to author and aggregate mind-opening contents / articles that inspire the world of our readers and liberate them from various myths. Our aim is to provide quality information to our visitors by linking highly experienced and qualified professionals with highly ambitious knowledge hunters. Our enhancement is never ending with consistent innovation made on the feedback our various visitors.



[www.chandigarhweb.com](http://www.chandigarhweb.com)

Chandigarh Web – The portal is designed to help the visitors, which include tourists and Chandigarh & tricity residents, to make them easy to find the places and other prospective searches like transportation, current events, restaurants, cafes & eateries, mall and multiplexes, hotels and other useful information about the city. Vision of Chandigarh Web is to develop an information channel for the residents and visitors of this city to keep them updated with all current affairs and important information about tricity – Channdigarh, Panchkula, Mohali and its suburbs Kharar & Zirakpur. Chandigarh Web links various vendors with the buyers by creating a user account and list their business.



## Training

### *(Software Development & implementation and Networking)*

#### 1. Software Training

We provide training to the budding technical graduates and post graduates in different technologies. Our main focus is on JAVA, PHP, Android and Dot Net technologies. Brilliant students get training under our most sophisticated Training Program named HOPE (Highly Objective Professional Expertise)

#### 2. Networking Training

We train students and make them ready to face industrial challenges. We have state of art laboratories, equipped with latest hardware, may these be servers, routers and switches, to name a few. Our main focus is to train students for CCNA, Comptia, Cloud Computing etc.

Here too Brilliant students get training under our most sophisticated Training Program named HOPE (Highly Objective Professional Expertise)

#### 3. Certification in PisoftERP

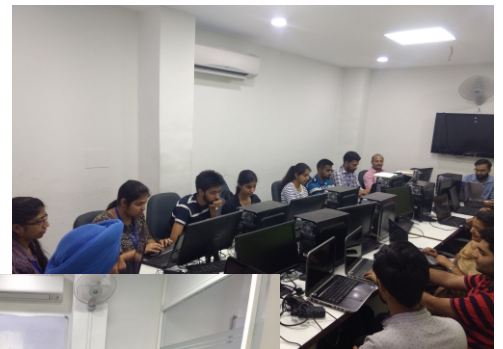
After completion of HOPE Training our students may go for Certification in PisoftERP. It will be a 30 days training program which enhances students employability. It will be a paid as well as company sponsored training program.

#### What is HOPE ?

HOPE (Highly Objective Professional Expertise) is an exclusive company sponsored Internship Program.

The main features of HOPE Program are as under:

- Six Months Internship program for students under-going IT Studies
- Advanced level expertise in technology
- Develop Live Project
- Coverage of Basic + Advance topics
- Fully/Partly Company Sponsored
- Soft Skills Development
- Interview Preparations
- Training by industry experts





User Friendly



Secure & Reliable



Mobile Versions



Amazing Support



Custom reports



Flexible Pricing



Manage Multiple  
departments



Wide Range of  
Features



Modern Web  
Technologies



Multi device  
compatible



Affordable  
Customization



New modules and  
updates

## Key Benefits of PisoftERP

PisoftERP help the industry and business houses to manage the above problems in a very simple and accurate way. Benefits of using PisoftERP are as under:

- ✓ Reduced IT costs
- ✓ Increase revenue, profit, and market share
- ✓ Provide better experiences for employees, customers, and business partners
- ✓ Identify new business models and create competitive advantage
- ✓ Drive real-time decision making with immediate insights and predictive analytics
- ✓ Increase business agility and accelerate innovation
- ✓ Gain real-time insight into organizational information and metrics.
- ✓ Improve response requests with centralized databases and automated follow-up
- ✓ Increase efficiency and effectiveness
- ✓ Information instantly available for better decision-making.
- ✓ Streamline and automate critical processes to free up time for value-added work.
- ✓ Integrate data and streamline information flow across different users.
- ✓ Systems, departments, and external agencies have greater collaboration.
- ✓ Enable regulatory compliance through accurate fund and account management.
- ✓ Effectively manage your most valuable assets.
- ✓ Simplify the management of data and performance.
- ✓ Provide enhanced web access for information to human resources.
- ✓ Increase stake holder's satisfaction for information flow.
- ✓ Gain a holistic view of interactions across multiple channels.
- ✓ Enable one-stop self-service through web.
- ✓ Increase ability to analyse service trends
- ✓ Respond quickly to changing constituent needs.
- ✓ Conduct targeted community outreach with comprehensive communications tools.

Call us for  
Demonstration at  
**+91-82880-29930**

### Pisoft Informatics Pvt. Ltd.

F-468, Ground Floor, Industrial Focal Point,  
Phase 8-B, Mohali, Punjab.

Mobile: +91-82880-29930

info@pisoftindia.com | www.pisoftindia.com

